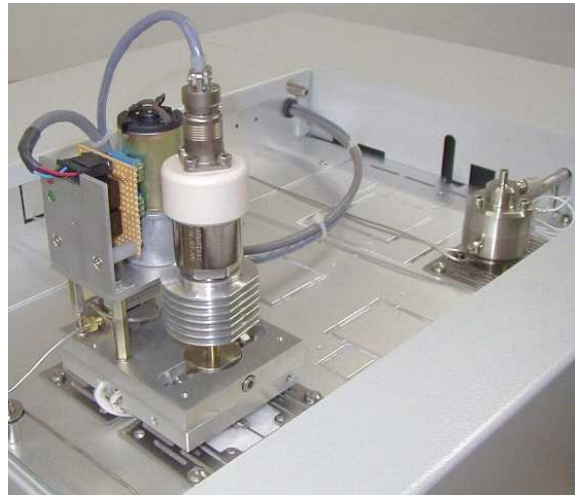
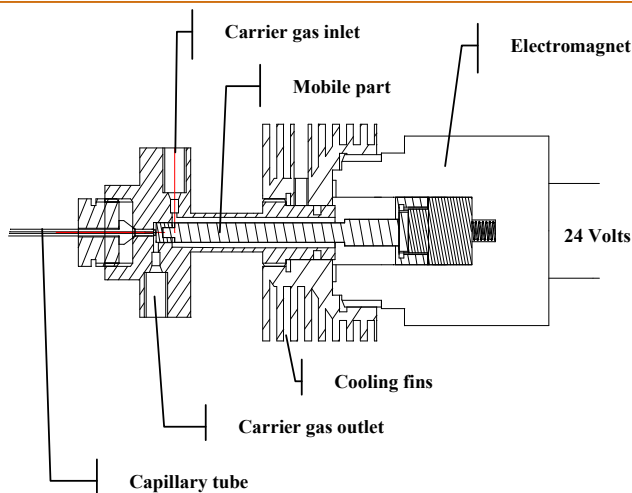




## **ROLSI™ (Rapid On Line Sampler Injector)**

ROLSI™ is a product developed by the CENERG-TEP laboratory of the ENSMP (Ecole Nationale Supérieure des Mines de Paris). Armines patent, Transvalor brand.

■ **Sampler for gases or liquids**



Schematization of the ROLSI™ principle

▼ **Sampling representative of a mixture  
in the liquid or gas phase** ▼

**PRESSURE** up to 60 MPa

**TEMPERATURE** up to 350°C

**LIQUID or GAS**

Main applications : GPL, process control, etc...

■ Entirely controlled by the PR2100 GC

***PERICHROM***  
INSTRUMENTATION  
SCIENTIFIQUE

*Your specialist*

# ROLSI™



## *ROLSI™ description*

---

The Rolsi™ sampler which temperature is regulated (until 623 K) can be connected to an autoclave, a chemical reactor or a process line for an adjustable size sampling from 0,001 to a few mg. The sample is directly sent vaporized in the carrier gas flow at the head of the column of the gas chromatograph (GC).

For given fluid, pressure and temperature conditions, the taken volume is directly a function of the opening time (break of airtightness at the end of the capillary tube by the action of the electro magnet) adjustable from some hundredth of second till some seconds.

Materials are studied to guarantee a great stability and a chemical inertia.

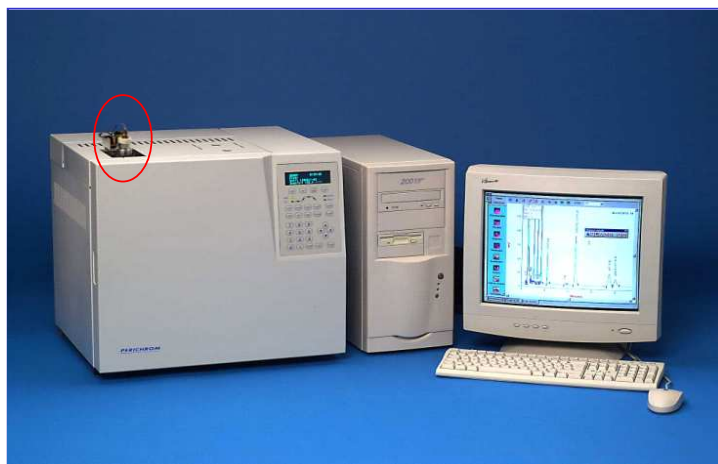


## *Examples of applications*

---

The ROLSI™ sampler can be used with any fluids (liquid, vapor, cryogenic or in a supercritical state) until extreme pressure and temperature conditions (simultaneously 60 MPa - 623 K).

Campaigns of measures of equilibrium phases (LV, LL, LLV, SL) were realized in the CENERG-TEP laboratory within the framework of numerous industrial contracts.



**Completely controlled by the PR 2100 GC**

**Allows the use of packed and capillary columns.**

**Time of opening and temperature registered in the method**

**purge valve integrated**

**Compact**

***PERICHROM***  
INSTRUMENTATION  
SCIENTIFIQUE

*Your specialist*

---

Z.A.C. du Moulin n°2 - 91160 SAULX-LES-CHARTREUX - FRANCE  
Tel. : 33 1 64 54 89 69 Fax : 33 1 69 09 80 91  
contact@perichrom.com